

Feature



Product Overview

Aluminum heat-sink base and no glare.

Constant current with P.F.C mode.

High-quality, High-brightness LEDs provide high efficiency and energy-saving lighting. Glare-free, flicker-free, and provides an evenly lit surface.

Lamp materials allow more than 90% light transmittance.

Aluminum lamp casing provides high thermal conduction.

Long-lifespan - on average over 30,000 hours.

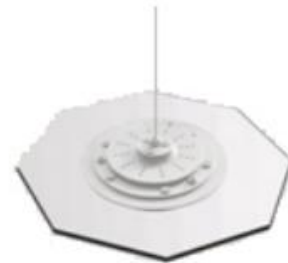
Able to handle voltages from AC100 -240V.

Anti-shock.

Easy installation.



Product Pictures



Main technical parameters

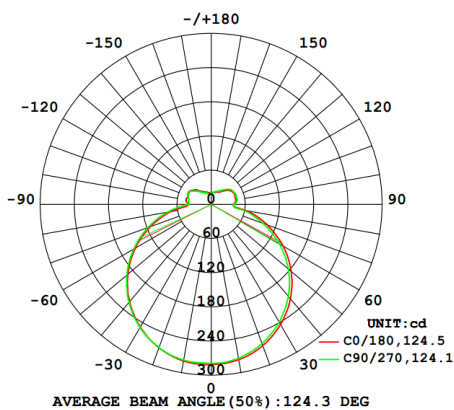
φ 15.7" /15.7"x15.7" LED Transparent Panel technical parameters LED				
Part Number : BM-TPL00020				
No.	Item	Description		
1	Input voltage	☐ AC200-240V ■ AC100-240V		
2	Power Consumption	20W±10%		
3	Luminous Flux	1600lm±10%		
4	Emitting Color	Warm white	Neutral white	Cool white
5	Color Temperature	■ 3000K±150K	■ 4000K±250K	■ 5000K±250K
6	Luminous Efficiency	80lm/w		
7	SDCM	≤6		

8	Beam Angle	140°	
9	Lifespan	30,000 Hours	
8	CRI Ra	≥80	
10	PF	≥0.9	
11	Certifications	RoHS CE TUV GS	
12	Net Weight	≈2.8lbs	
13	Gross Weight	≈5.3lbs	
14	Size	■ 15.7"x15.7"x1.5"	■ φ 15.7"x1.5"
15	LGP thickness	0.2"	
16	LED brand	Bridgelux	
17	THD	≤15%	
18	Operating Ambient	-4°F to +113°F	
19	Ambient	-4°F to +122°F	
20	IP code	IP20	
21	Installation	■ Suspending wire	■ Ceiling
22	Brightness Dimming	-----	
23	CCT	-----	

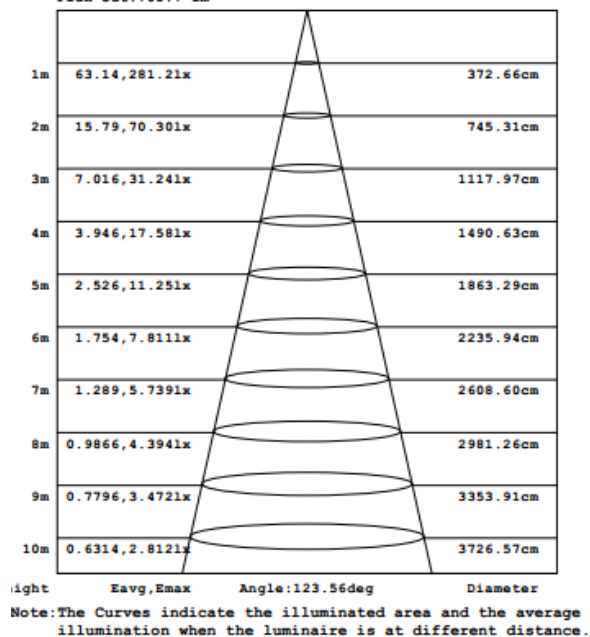
Light Distribution Graph

Illumination Intensity Chart

LUMINOUS INTENSITY DISTRIBUTION DIAGRAM

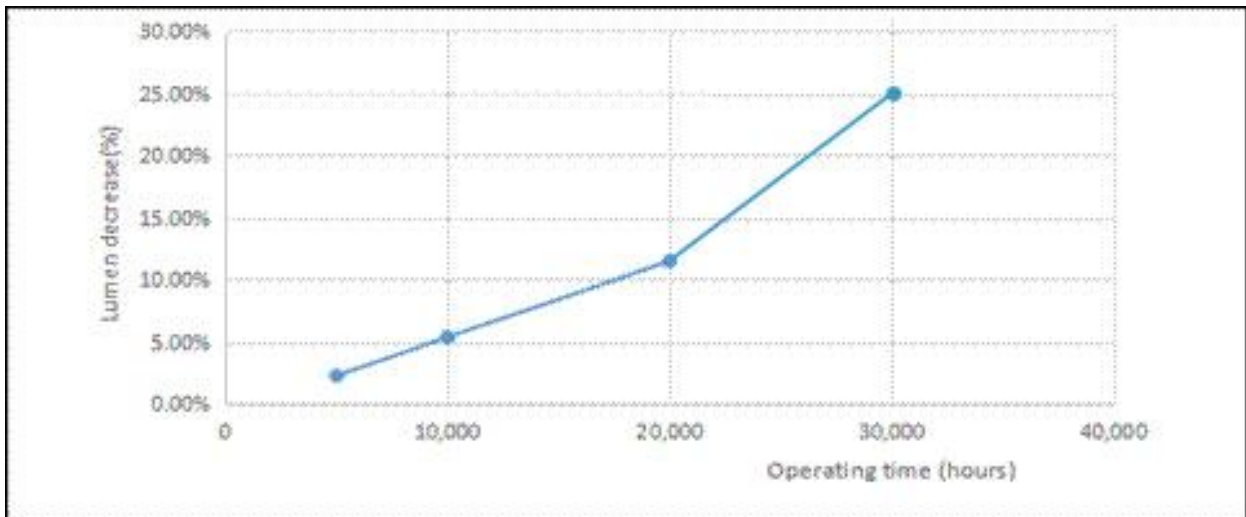


Flux out: 701.7 lm

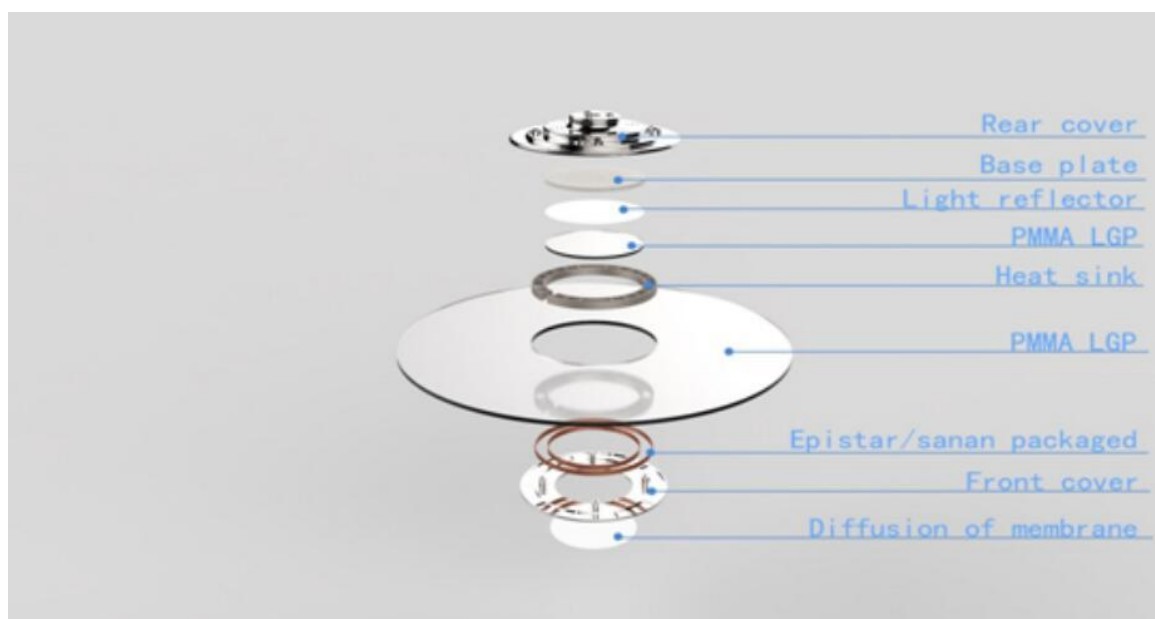
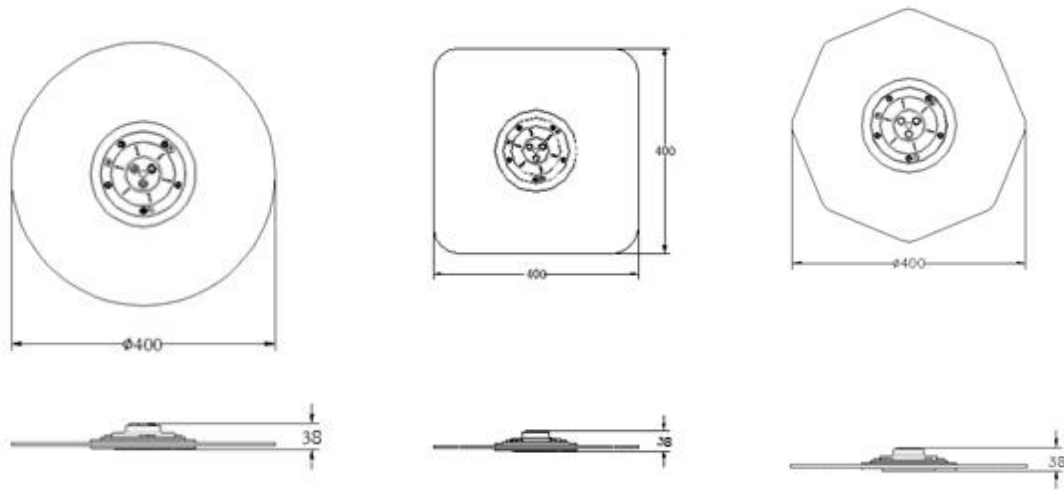


LED Lumen Attenuation

Operating time (hours)	Lumen decrease(%)
5,000	≈2.3
10,000	≈5.4
20,000	≈11.5
30,000	≈25.2

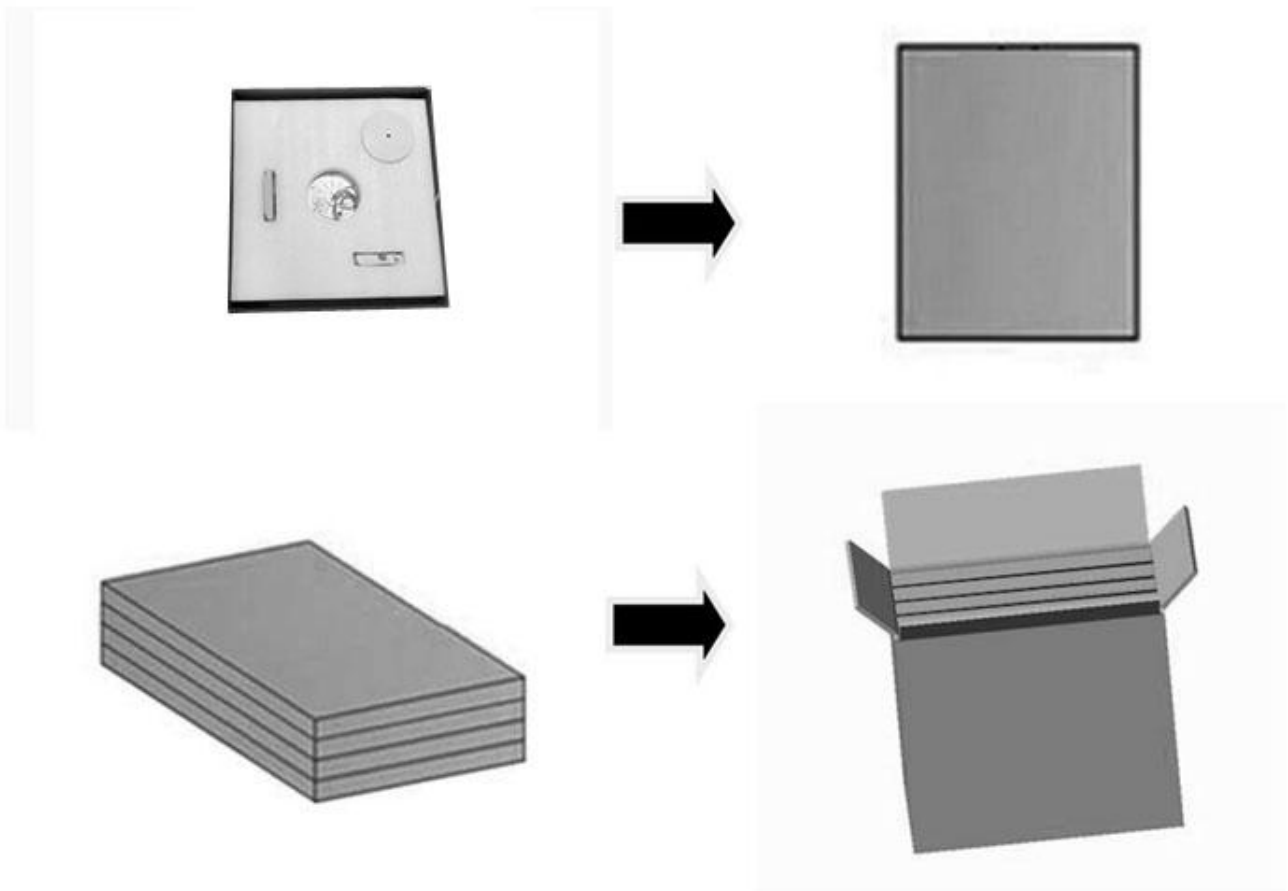


Size drawing (mm)



Package

Package way	Outer box dimension	Inner box dimension	QTY.
01	19.9"x11"x20.1"	18.7"x18.7"x2.6"	4PCS/CTN



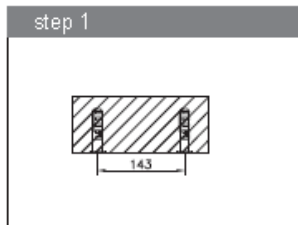
Installation

Notes:

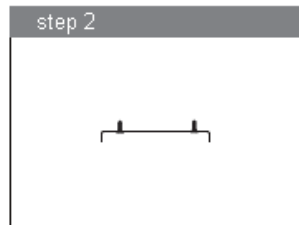
1. The input voltage of panel light is 200-240VAC. The diameter of the power line needs to be more than 0.5 mm².
2. Please make sure that the power is cut off during installation and maintenance. Turn on the light on only after the installation is finished.
3. Make sure there is good ventilation on the back of the panel light. The usage of this luminaire can not infringe any anti-fire rules.
4. Before the installation, please check the building structure and the materials of the mounting location to make sure it is secure and can support the weight of the LED panel.

5. Do not use this luminaire in the bathrooms.
6. Please contact to the supplier if you have any questions about these instructions.

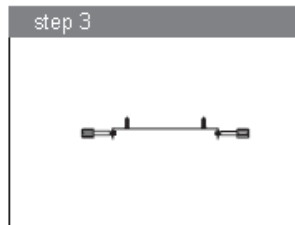
Installation Accessories Kit-1: Metal suspending wire



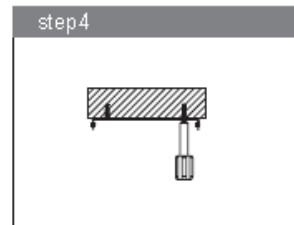
Expansion bolt embedded in building surface



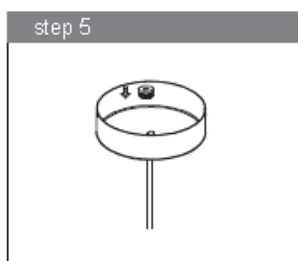
Insert the selftapping screw through the fixing device



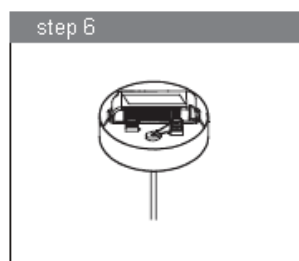
screw in "tapping screw" in fixing device



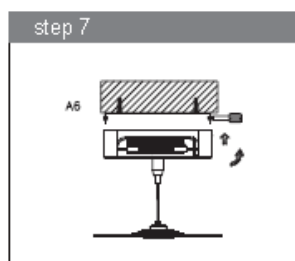
tighten screw



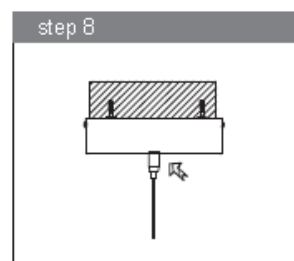
connect the hanging rope and ceiling box, then tighten the screw.



put the driver into the ceiling box and connect the cable.

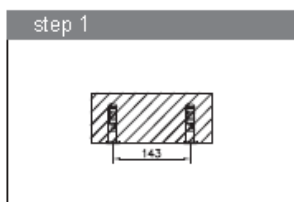


evolving ceiling box upward along the gap, then tighten the screw

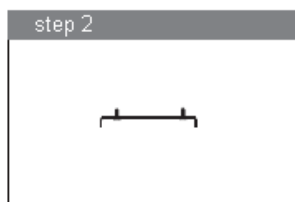


Hanging the lamp by connecting the hanging rope and joint, make the length is adjustable.

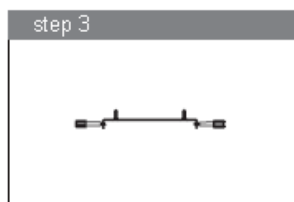
Installation Accessories Kit-2: Ceiling installation



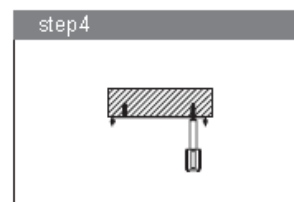
Expansion bolt embedded in building surface



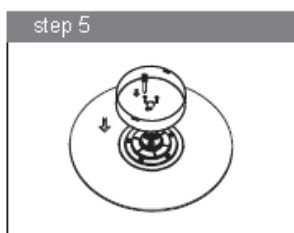
Insert the selftapping screw through the fixing device



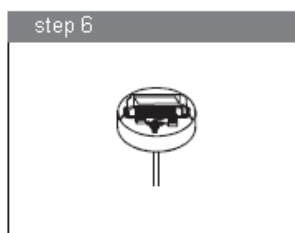
Screw in "tapping screw" in fixing device



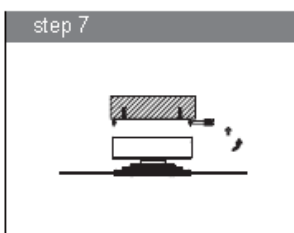
Tighten screw



Aligning the 3 holes of fixing device with the panel aluminum profile, lock the bolts and tighten to be fixed.



Put the driver into the ceiling box and connect the cable.



Revolving ceiling box upward along the gap, then tighten the screw.